



Assessing the EKC hypothesis by considering the supply chain disruption and greener energy: findings in the lens of sustainable development goals

Kamel Si Mohammed¹ · Sunil Tiwari² · Diogo Ferraz^{3,4,5} · Irum Shahzadi⁶

Received: 22 July 2022 / Accepted: 25 September 2022 / Published online: 7 October 2022
© The Author(s), under exclusive licence to Springer-Verlag GmbH Germany, part of Springer Nature 2022

Abstract

This paper investigates the effect of the supply chain disruption, greener energy consumption, and economic growth on carbon emissions in advanced economies and emerging markets from 1997 to 2021 using panel quantile autoregressive distributed lags (QARDL) and the panel quantile regression (QR). The results of the two models confirm, on the one hand, the validity of the environmental Kuznets curve (EKC) hypothesis and, on the other hand, the role of renewable energy consumption in mitigating carbon emissions in advanced and developing economies. Furthermore, the finding shows that the supply chain disruption for the long run is positive at all quantiles, indicating the evidence of association at the extreme low and high quantiles than at the intermediate quantile. In addition, the effect of the supply chain decreases at the lower quantile. It turns negative at the upper 90th quantile in the short run, indicating that the supply chain disruption reduces the environmental degradation under the bearish market conditions. In the future, the increasing supply chain disruptions due to the Russia-Ukraine conflict and further COVID-19 worldwide can consider sluggish economic growth and play an essential role in promoting renewable energy abundance and reducing CO₂ emissions. Practical implications are reported in the lens of carbon neutrality and structural changes.

Keywords Greener energy · Supply chain disruption · Carbon emissions · Panel quantile ARDL

Introduction

Global warming and climate change are not just transitory events; they represent an environmental concern for governments, companies, policymakers, and academic societies.

Responsible Editor: Arshian Sharif

Highlights

1. Long-run effects of supply chain disruption and greener energies are examined.
2. The study employed the panel quantile ARDL and quantile regressions.
3. Annual data of advanced and emerging economies was used from 1997 to 2021.
4. Finding shows that the supply chain disruption for the long run is positive at all quantiles for carbon emissions.
5. Practical implications are reported in the lens of carbon neutrality and structural changes.

✉ Irum Shahzadi
i.shahzadi@unesp.br

Extended author information available on the last page of the article

In this respect, no continent has been away from the harm thereof. Besides, carbon dioxide emissions contribute to GHG emissions, mainly due to fossil fuel combustion, cement production, and deforestation. Above and beyond, although carbon dioxide emissions resulting from fossil fuel combustion during 2020 decreased by 5.2%, because of the restrictions of the COVID-19 pandemic, global average carbon dioxide concentrations have recently reached a new high level of 413.2 parts per million in 2020, while CO₂ emissions have shown to be rising, in 2021, to 6% annually (IEA - International Energy Agency 2022). In fact, in light of the high emission of CO₂, the world is witnessing more economic growth and using renewable energy sources. Therefore, growth rates and the percentage of renewable energy consumption appear, out of total energy, as two essential variables that significantly affect carbon dioxide emissions (Çakmak and Acar 2022; Hoang et al. 2022; Zafar et al. 2022). Extensive literature results documented that renewable energy consumption mitigates carbon emissions for different periods, countries, and techniques. Mujtaba et al. (2022), Sharif et al. (2017a), and Chopra et al. (2022) employed the panel NARDL (with

asymmetric) and panel ARDL (without asymmetric) to examine the effect of renewable and non-renewable energy on the environment. It observes that renewable energy's linearity and nonlinearity effect compared to conventional energy tends to exert a significantly low level of elasticity, respectively, to increase CO₂. Dogan and Ozturk (2017) and Dogan and Seker (2016) found that the increase in renewable energy consumption mitigates carbon missions. Extensive research provided a positive and negative significant influence of renewable energy on environmental degradation by employing ECM, Var, and PVAR (Antonakakis et al., 2017; Apergis et al. 2010; Ben Jebli et al. 2015; Robalino-López et al. 2015). Furthermore, the literature has sufficiently studied the effect of economic growth on carbon emissions and tested environmental Kuznets curve (EKC) evidence, but the results are inconclusive. Zoundi (2017) used the panel cointegration to provide the incompletely environmental Kuznets curve (EKC) for 25 African countries. Multiple methods and models have provided the hold of the EKChypothesis, and the results obtained are contradictory (Balsalobre-Lorente et al. 2022; He et al. 2021; Lu et al. 2021; Ma et al. 2021; Vural 2020; Wang et al. 2022).

Furthermore, the performance of the supply chain contributes to enhancing the economic growth and the volume of trade, thus increasing the emissions of CO₂. Therefore, having a sustainable consumption and production is crucial to maintain the supply chain, economic growth, trade volume, and CO₂ emissions (Sharif et al. 2020a; Zhao et al. 2022). Previous scholars have paid great attention to the impact of logistics and transportation as the main parts of the supply chain system on the emissions of CO₂. Following the International Chambers of Shipping ICS (2020), the global sea routes are responsible for 90% of world trade transportation. The existing literature examined the relationship between logistics and carbon emissions, drawing mixed results. Karaduman et al. (2020) found a positive correlation in eleven Balkan countries. Magazzino et al. (2021) also demonstrated a similar effect for 25 topmost logistics countries. Sohail et al. (2021) focused on air-railway transportation and concluded that this logistic and environmental pollution mode has a positive nexus.

On the contrary, another group reports negative relationships. Rehman Khan et al. (2018) documented a negative effect of poor logistics transport on carbon emission. Zafeiriou et al. (2016) use the Baltic Dry Index (BDI) to measure economic growth and environmental degradation. They also noted the negative sign in the relationship between BDI and carbon emissions. Shafique et al. (2021) used freight transport to demonstrate that transport costs cause CO₂ emissions. Santosa et al. (2022) established a negative relationship between carbon emission and logistics performance in ten ASIAN countries in a similar region. Liu et al. (2018) indicated a significant relationship.

International shipping drove the harmful carbon emission, while the logistics timeliness led to increased carbon emissions. The emissions of CO₂ are being determined by multiple factors, and supply chain disruption, renewable energy consumption, and economic growth are some of the leading ones (Farhan Bashir et al. 2022; Sharma et al. 2021a). In the situation like COVID-19 pandemic and Russia-Ukraine conflict, these effects are more palpable and significant, and this has been documented by several studies (Aktar et al. 2020; Wang and Su 2020; Muhammad et al. 2020; Baloch et al. 2020; Bannister-Tyrrell et al. 2020; Wu et al. 2020; Tosepu et al. 2020; Bilal et al. 2021). Furthermore, collective and sustainable integration of supply chain disruption, renewable energy consumption, and economic growth is required for green energy and environmental sustainability via reducing CO₂ emissions (Tiwari et al. 2022).

Nonetheless, the increasing disruption of supply chains interacts with the decline in economic growth, the decrease in freight operations, and the reduction in the emissions of CO₂. However, the economic literature has overlooked the impact of supply chains on the emission of CO₂. Consequently, the supply chain variable has become more efficient and modern than logistic and transportation proxy. In this context, Benigno et al. (2022) developed a new indicator drawn to capture supply chain problems and measure different dimensions of global chain disruption in developed and emerging markets, namely the USA, China, Japan, UK, Taiwan, and South Korea. These countries represent nearly 60% of world GDP, are highly dependent on renewable energy, and heavily approximate supply chain pressures. Our study uses this barometer to shed light on its effect on CO₂ emissions. We also examine the impact of economic growth and renewable energy consumption on carbon emissions. This is the first study to investigate the effect of the supply chain disruption on CO₂ emission in the recent data of the COVID-19 pandemic as a phenomenon that draws attention.

Furthermore, present work examined this effect for two decades, including the subprime crisis's breakpoint and the COVID-19 outbreak. This study opens a novel theoretical lens that adds the supply chain pressure as a primary determinant of environmental degradation. Indeed, examining the effect of the supply chain on CO₂ emission due to the interaction with economic growth exhibits urgent attention to guide and contribute to the firms, monetary policymakers and governments, and international institutions. Additionally, our study employs a panel quantile ARDL model to check the effect of our explanatory variables on carbon emissions. Already previous research have used panel quantile regression with QARDL approach for dealing with panel data. QARDL method initiated by Cho et al. (2015) is an extended procedure of the autoregressive distributed lag approach of Pesaran and Shin (1998) and provides a great deal of information about the quantile-dependent short-run

dynamics and the long-run cointegrating parameters. Hence, QARDL is the best approach to measure different effect levels of the independent variables at all levels of the dependent variable in both short and long run.

The remainder of the paper is organized as follows. The “Literature review” section summarizes the literature review. The “Data sources” section provides the user data in this study. The “Methodology” section describes the model and the methodology. The “Results and discussion” section discusses the findings. Finally, the “Conclusion” section concludes the paper.

Literature review

Nexus supply chain—CO₂ emissions

Supply chains have shown to be the most affected during the COVID pandemic due to the loss of thousands of employees and disruption of production, logistics, and transport sectors (Chen et al. 2022; Choi 2020; Chowdhury et al. 2021; Ivanov 2020; Nundy et al. 2021). The immediate consequence was the gradual paralysis of supply chains in several continental areas (Asia, Europe, North America) and sectors (automotive, chemicals, electronics, garments and textiles, machinery, metal, and medical devices). The transportation modes, particularly maritime transport, are operated in the supply chain, affecting the macroeconomic variables (Pham and Sim 2020). Zafeiriou et al. (2016) tested the relationship between Baltic Dry Index (BDI) and environmental degradation by applying the Threshold Vector Error Correction Model (TVECM). They provided the negative effect of the BDI on carbon emission besides the existence of the causality relationship between them. Suki et al. (2021) employed the CS-ARDL in the Asian region and confirmed the logistics index’s significant effect as the main deterrent to counter emission carbon. Besides maritime and road transport, Sohail et al. (2021) focused on the air-railway transportation increase in Pakistan from 1991 to 2019 to positively affect environmental pollution using the nonlinear ARDL. Shafique et al. (2021) carried out a similar analysis, and they used freight transport to assess the transport cost and its relationship with economic growth and CO₂ emissions in ten Asian countries from 1995 to 2017. Their study demonstrated that freight transport increases environmental degradation. The environment Kuznets curve (EKC) hypothesis is most trusted and tested approach to measure the environmental issues such as CO₂ emissions, environmental degradation, global warming, and climate change due to economic growth, supply chain, and trade volume (Sharif et al. 2017b). The EKC hypothesis states that economic growth and

high supply chain cause environmental problems for the certain period of time, and once establishing a balance between production and consumption, it becomes a factor to reduce environmental problems. Several studies used the EKC hypothesis for assessing the relationship between economic growth and environmental degradation like CO₂ emissions (Stern et al. 1996; Bella 2018; Katircioglu 2014; Sharif et al. 2019; Khan et al. 2019; Sharif et al. 2020b; Suki et al. 2020; Sharma et al. 2021b).

Karaduman et al. (2020) employed fixed panel data and used the logistics performance index from the World Bank to measure the logistics effect on carbon emissions for eleven Balkan countries. The results indicate a positive relationship between logistics and carbon emission, indicating that countries with higher logistics performance tend to have lower carbon emissions per capita (Santosa et al. 2022). A similar study for ten ASIAN countries shows a negative correlation between carbon emission and logistics performance. Liu et al. (2018) report a significant relationship between logistics index and environmental degradation for 42 ASIAN countries. Rehman Khan et al. (2018) focused on logistics transport to arrive in their study that the poor logistics contribute negatively to carbon emission and economic growth using the generalized method of moment (GMM) for 43 countries. Mariano et al. (2017) constructed a composite index to measure the low carbon logistics index in the transport sector for 104 countries on different continents. Magazzino et al. (2021) have engaged in panel GMM, fully modified ordinary least squares (FMLOS), and panel quantile regression in 25 topmost logistics countries. They found a positive impact of the logistic index on carbon emissions and a negative effect on economic growth. Zhu et al. (2022) also demystified the nexus between global supply chains and CO₂ emissions by using input–output model. The results demonstrated a potential significance of global supply chain disruption in managing low level of CO₂ emissions by directing policies measuring for economic growth and development.

Nexus renewable energy consumption—CO₂ emissions

Clean energy has become the concern of many countries worldwide, in concurrence with the energy transformation within the plans aiming to reduce emissions due to fossil fuels, climate changes, and switch to renewable energy sources, especially with the increase of population and the energy consumption. In 2020, the International Energy Agency (IEA) reported that global energy consumption considered with 601.5 quadrillion BTU will increase to quadrillion BTU 842.8 in 2045, Annual Energy Outlook, 2021 (U.S. Energy Information Administration 2021). The previous literature has sufficiently studied the effect of renewable energy on carbon emissions, but the results

are inconclusive. Note that renewable energy mitigates environmental degradation. Mujtaba et al. (2022) employed the panel NARDL (with asymmetric) and panel ARDL (without asymmetric) to examine the effect of renewable and non-renewable energy on the environment. It observes that renewable energy's linearity and nonlinearity effect compared to conventional energy tends to exert a significantly low-level elasticity to increase CO₂. Dogan and Ozturk (2017), Dogan and Seker (2016) found that the increase in renewable energy consumption mitigates carbon missions. Extensive research provided a positive and negative significant influence of renewable energy on environmental degradation by employing ECM, Var, and PVAR show (Antonakakis et al. 2017; Apergis et al. 2010; Ben Jebli et al. 2015; Robalino-López et al. 2015; Shahzad et al. 2022). Few studies examined the effect of renewable energy by focusing on interaction via economic growth (Ehigiamusoe and Dogan, 2022). In their research, the interaction is positive and varied with the GDP level of 31 low-income countries by using modified ordinary least squares (FMLOS) and dynamic ordinary least squares (DLDS). York and McGee (2017) documented the small impact of renewable electricity via GDP interaction on CO₂ emissions in 128 countries using fixed panel regression. Moreover, as per the study conducted by Adebayo et al. (2022) shows that there is negative impact of renewable energy on emissions of CO₂ in all quantiles. This illustrates the degradation of natural environmental in accordance to upsurge in renewable energy consumption. Findings suggested the adoption of green technologies in supply chain and trading system with increased government's effort towards raising eco-friendly policies such as restriction on fuel subsidies, decreasing CO₂ emissions, and increase in bio-fuel consumption. Furthermore, uses of renewable energy resources like solar, wind, hydropower, and bioenergy are always good for environmental well-being.

Nexus economic growth—CO₂ emissions

A larger empirical study has investigated the economic growth-environmental nexus, which follows an inverted U-shaped association. The literature has known the environmental Kuznets curve (EKC) (Kuznets 1955). Multiple methods and models have provided the hold of the EKC hypothesis, and the results obtained are contradictory. Some groups validate the EKC hypothesis (Balsalobre-Lorente et al. 2022; He et al. 2021; Ma et al. 2021; Shahbaz et al. 2013; Vural 2020), and the other group does not hold this postulate (Bölük and Mert 2014; Frodyma et al. 2022; Robalino-López et al. 2015; Soytaş et al. 2007). In addition, the third group examined the link between economic growth and carbon emissions without verifying the EKC hypothesis. Namahoro et al. (2021) found negative economic growth in carbon emissions for 50 African countries, but the effect varies across countries and GDP per capita levels. Banday and Aneja

(2020) detect the causality from GDP to CO₂ emissions for BRICS countries except for Russia. Song (2021) establishes a positive association between economic growth and carbon emission in 30 China provinces using a panel threshold regression. Zoundi (2017) provided the incompletely environmental Kuznets curve (EKC) evidence in the long run for 25 African countries. Adebayo et al. (2022) measured the association between economic growth and CO₂ emissions with the help of quantile-on-quantile regression (QQ) and quantile regression (QR) approaches. Findings suggested the negative impacts on economic growth on CO₂ emissions at most of the quantile combinations. Outcome of the study also validates and supports the EKC hypothesis.

Data sources

This paper investigates the effect of the supply chain pressure, renewable energy, and economic growth on the carbon emissions from 1997 to 2021 for a panel of annual data in advanced economies (Euro Area, Japan, UK, USA) and emerging markets (China, South Korea). The first variable represents a new indicator drawn to capture supply chain problems and measures different dimensions of global chain disruption. It offers country-specific supply chains in developed and emerging markets, namely the USA, China, Japan, UK, Taiwan, and South Korea. In addition, it regroups 27 variables, including logistics networks, transportation, container shipping costs, and Purchase Manager Index (PMI) surveys.

This new index was downloaded from the St Louis Federal Reserve Bank. Taiwan is not included where the other variable data are not available. The second variable is the economic growth per capita and retrieved from Organization for Economic Cooperation and Development (OECD). The third and four datasets include renewable energy consumption as a percent of total final energy consumption (REC) and CO₂ emissions per capita. These two last variables were collected from the World Development Indicators. The data extend from 1997 to 2021 for many reasons. First, the New York Federal Reserve calculates the supply chain pressure index based on principal component indices extracted communally since 1997. Second, the GDP growth and GHG emissions have become more prominent and faster since the second half of the 1990s, especially in Asian countries. The panel quantile ARDL model is favorable for more than 20 observations per country (Arshed et al. 2022). The period estimation reflects enough time to capture the effect of this study in the long run.

Methodology

Our research employs the panel quantile regression and panel quantile ARDL to determine the effect of supply chain disruption, economic growth, and renewable energy on carbon

emissions in advanced and developing economies. The panel quantile proposed by Sim and Zhou (2015) is widely used in the literature to quantify the effect of the quantile-dependent variable on the quantile explanatory variable under different market conditions (bearish, normal, and bullish) (Adebayo et al. 2022; Mo et al. 2022; Su et al. 2022). The panel QR assess the effect and symmetric test among variables. On the contrary, a traditional model can only estimate the average effect and cannot avoid feasible market conditions. The panel quantile regression can help avoid false results through heteroskedasticity, skewness, and multicollinearity (Dawar et al. 2021) and structural breaks (Selmi et al. 2018; Xiao et al. 2019).

Further, QR tests the relationship and symmetric effects among variables. In addition, the panel quantile regression was developed for the panel quantile ARDL approach, which can capture the outcome in the short and long run. It is much more feasible and performant in the long- and short-run estimation. The panel quantile ARDL model is appropriate with the time of more than 20 and the presence of cointegration and stationarity but not more than the first difference (Arshed et al. 2022).

The mathematical equation of panel QARDL is estimated as follows:

$$\Delta CO_{2it} = \alpha + \beta_1 \Delta SCH_{it}^{\Theta} + \beta_2 \Delta GDP_{it}^{\Theta} + \beta_3 \Delta GDP_{it}^{2,\Theta} + \beta_4 \Delta REC_{it}^{\Theta} + \beta_5 SCH_{it}^{\Theta} + \beta_6 GDP_{it}^{\Theta} + \beta_7 GDP_{it}^{2,\Theta} + \beta_8 REC_{it}^{\Theta} + \varepsilon_t^{\Theta} \quad (1)$$

where CO_2 denotes the carbon emissions, SCH depicts the slope coefficient of the supply chain disruption, which detects the effect of the quantile of SCH on the quantile of CO_2 . $\beta_2 GDP_{it}$ represents the economic growth (constant US dollar) while $\beta_3 GDP_{it}^2$. The validity of the environmental Kuznets curve assumes that the coefficient of economic growth at different quantile $\beta_2 GDP_{it}$ is positive and $\beta_3 GDP_{it}^2$ is negative and vice versa. REC can explain the renewable energy in the model that t and I respectively stand the time and cross-section. Θ is the quantile level. β_1 , β_2 , β_3 , and β_4 are the coefficients in the short run, whereas β_5 , β_6 , β_7 , and β_8 are the coefficients in the long run. Finally, ε_t^{Θ} represented the quantile error correction term correcting of speed adjustment error term.

Results and discussion

Table 1 presents summary statistics of the panel and country-specific data. The mean of renewable energy consumption as a percent of total final energy in (China, the Euro Area, and the USA, respectively) is higher than in other countries (Japan, the UK, and Korea). The minimum renewable energy consumption remains weak and near 0.7% for Korea, while the maximum is evidently in China (30.6%).

The USA is the biggest carbon dioxide emitter during the period estimation. It also is the most volatile CO_2 emission.

Additionally, we observe that the Euro Area is less volatile in standard deviation CO_2 emission. The mean per capita incomes in advanced economies were higher than in emerging markets like China. In this context, the standard deviation exceeds 7 SD compared to 4 SD and 3 SD in China and Korea. The supply chain disruption variable is negative in the panel and individual descriptive statistics. According to Table 1, the Jarque–Bera test and normality for all the panel variables are significant, meaning the series times are not a normal distribution.

Unit root test results

We consider two types of panel unit root tests. The first type is applied with a common process and involves two different tests (Breitung 2001; Levin et al. 2002). The second type verifies unit root using individual procedures proposed by Im et al. (2003) and Maddala and Wu (1999). The results of the panel unit tests root results are shown in Table 2.

The results of the unit root tests show that the series is stationary at different orders. The null hypothesis of unit root with common and individual processes is rejected, indicat-

ing that the supply chain is stationary at the level. However, the individual unit root process shows that the CO_2 emissions, economic growth, and renewable energy series contain a unit root, which is stationary at first. Therefore, it is appropriate to use a method based on the ARDL approach for integrated series of a different order.

Cointegration test

Table 3 documents the results of the cointegration. This section examines the null hypothesis of no cointegrated among the variables against the alternative hypothesis that the variables are congregated. The (Kao 1999) test is preferable in this study and is more appropriate for mixed stationarity levels (Arshed et al. 2022). Our finding accepts the alternative hypothesis and provides the cointegration that the variables move together in the long run.

The panel quantile ARDL results

Table 4 shows the panel quantile ARDL model from economic growth, renewable energy, and the supply chain disruption effects on carbon emissions. This table is divided into two. First, we show the process estimation for the short run (see Table 4 (A)). Second, Table 4 (B) reported the process estimation for the long run. Economic growth's impact on the short-run carbon emissions shows a positive effect at all

Table 1 Descriptive statistics for individual and panel variables

		CO ₂	EG	RE	SCH		
	Mean	10.26408	31.00413	8.120453	− 0.110004		
	Median	9.440400	34.96064	6.396700	− 0.106269		
	Maximum	21.33570	65.27953	30.50605	1.364182		
	Minimum	2.614400	0.781744	0.676453	− 3.929505		
	Std. dev	4.453282	15.79625	6.773254	0.598408		
	Skewness	0.978795	− 0.390446	1.401562	− 1.505210		
	Kurtosis	3.579984	2.436933	5.008899	13.49541		
	Jarque–Bera	24.83756	5.522408	70.86356	710.3306		
	Probability	0.000004	0.043216	0.000000	0.000000		
	Sum	1467.763	4433.591	1161.225	− 15.73055		
	Sum Sq. dev	2816.105	35,432.06	6514.530	50.84915		
	Observations	150	150	150	150		
Variable	Statistics	CHINA	EURO_AREA	KOREA	JPN	UK	USA
REC	Mean	18.669	11.239	1.354	4.684	3.119	6.881
	Maximum	30.506	16.400	2.868	6.975	8.680	9.919
	Minimum	11.338	7.231	0.676	3.580	0.853	4.514
	Std. dev	7.509	3.587	0.765	0.938	2.607	1.825
CO ₂	Mean	5.288	8.707	9.635	11.086	8.027	18.723
	Maximum	7.412	9.348	10.251	13.125	9.748	21.336
	Minimum	2.614	7.742	8.150	8.118	4.855	14.238
	Std. dev	1.867	0.396	0.505	1.478	1.644	2.153
GDP	Mean	4.534	32.946	38.825	21.748	39.180	47.935
	Maximum	10.435	42.185	49.145	33.423	50.653	65.280
	Minimum	0.782	20.166	32.424	8.282	26.743	31.459
	Std. dev	3.453	7.523	4.267	7.824	7.169	10.121
SCH	Mean	− 0.119	− 0.053	− 0.024	− 0.210	− 0.090	− 0.095
	Maximum	1.547	1.347	0.269	1.046	1.142	1.360
	Minimum	− 1.066	− 1.202	− 0.260	− 3.930	− 1.039	− 1.198
	Std. dev	0.640	0.575	0.146	0.902	0.507	0.689

quantiles except at the upper quantile (0.9th). In addition, at low quantiles, the impact of 1% of economic growth leads to an increase in the emission of carbon by 0.22% and 0.14% from low quantiles (10 th and 20 th) at the mean and high quantiles, and the results indicate a weak influence, whereas

at upper 90 th quantile, the effect turns negative. The gdp^2 is negative that detects strong evidence of the EKC hypothesis. The impact of renewable energy consumption decreases from 0.18 at lower quantile to 0.11 at high quantile, illustrating renewable energy consumption’s role in mitigating

Table 2 Panel unit root test results

	Unit root with common process			
	SCH	CO ₂	RE	EG
Levin-Lin-Chu	− 5.024*** (a)	− 0.369	− 4.725*** (b)	− 5.132*** (b)
Breitung	− 4.171*** (a)	− 1.751** (b)	− 1.723*** (b)	− 3.790*** (b)
Individual unit root process				
Im, Pesaran, and Shin W-stat	− 6.121*** (a)	− 2.871*** (b)	− 4.014*** (b)	− 3.479*** (b)
ADF—Fisher chi-square	55.15*** (a)	27.897** (b)	40.906*** (b)	34.930*** (b)
PP—Fisher chi-square	306.104*** (a)	68.681*** (b)	71.830*** (b)	66.718*** (b)

***, **, and * denote statistical significance levels of 1%, 5%, and 10%, respectively. In addition, a and b imply level stationarity and first difference stationarity, respectively

Table 3 Cointegration test

Kao test	T statistic	Prob
	-2.5929***	0.0048

***, **, and * denote 10, 5, and 1 statistical significance levels

environmental degradation in advanced economies and emerging markets. The effect of the supply chain decreases from 0.18 at the lower quantile, then converges to zero after the increase, and turns negative later at the extreme 90 th quantile.

Moving on to the effect, in the long run, we also observe that the impact of economic growth on the carbon emissions, in the long run, is positive at low and the intermediate quantiles while turning to be negative at high quantiles. Economic growth in the short run seems to be more critical than in the long run. The square of the GDP is negative from quantiles (40 th–90 th), which accepted the EKC hypothesis in the long run. These results support the findings related to impact of renewable energy consumption on the is negative for most of the combination of couple prices quantiles reported in the literature.

Moreover, it is noted that the supply chain disruption for the long run is positive at all quantiles indicating stronger evidence of association at the extreme low and high quantiles than at the intermediate quantile. Furthermore, the

adjustment coefficient (ECM) speed seems negative and significant, indicating that the model corrects itself to equilibrium very slowly at the mean by 0.8%. Likewise, low and high quantiles at the extremes, showing the converge towered slowly in the bullish and moderate than bearish market conditions. GDP growth is not the only reason beyond environmental degradation in our cases. Renewable energy consumption and supply chain disruption are also the primary reasons for the CO₂ emissions.

In contrast, the positive effect in the short and long run of the supply chain is significant for most quantiles. It is somewhat converging relatively for advanced economies and emerging markets. The impact of renewable energy consumption seems more critical than economic growth and supply chain disruption during the short- and long-run periods. In this context, it would engage in the manufacturing more depending on renewable energy and intensifying competitive pricing under supply chain disruption. Additionally, it is essential to imply that the global supply chain will keep being under authorities’ attention in the present and future to interact with economic growth as a catalytic effect on the carbon emissions. Furthermore, supply chain managers can consider the permanent inflation and price escalations, especially during the Russia-Ukraine war and further COVID-19 worldwide that can be lagging the economy directly and the environmental degradation indirectly.

Table 4 Panel quantile ARDL process estimates

The short-term effect (A)						
Quantile	EC	EG2	RE	sch	Lco2	ECT _{t-1}
0.100	0.2244*	-0.0024*	-0.1527*	0.1577**	-0.0422*	-0.6300*
0.200	0.1448*	-0.0013*	-0.1437*	-0.0699**	-0.0173*	-9.2500*
0.300	0.1171**	-0.001*	-0.1795*	0.0548**	-0.0084*	-1.0600*
0.400	0.0452**	-0.0002*	-0.1305*	0.0414**	-0.0079*	0.0200*
0.500	0.2392*	-0.0025*	-0.1779*	-0.0211**	-0.0365*	-0.8000*
0.600	0.0718*	-0.0012*	-0.1068*	0.1941**	-0.0083*	2.1300*
0.700	0.0369*	-0.0002*	-0.1091*	0.0520**	0.0016*	-9.5600*
0.800	0.0895**	-0.008324	-0.1131*	0.0102**	-0.0076*	2.1300*
0.900	-0.3166***	.0077904	-0.1133*	-0.0025***	0.0617	-1.8900*
The long term effect (B)						
	EG	EG2	RE	SCH		
0.100	0.0266*	-0.0006*	0.0042*	0.2029*		
0.200	0.1598*	-0.0005*	0.0010*	0.0345*		
0.300	0.0089*	-0.0003*	-0.0030*	0.0404*		
0.400	-0.0002*	-0.0001*	-0.0077*	0.0920*		
0.500	0.0291*	-0.0006*	0.0055*	0.0518*		
0.600	-0.0177*	0.0002*	-0.0001*	0.2509*		
0.700	-0.0152*	0.0001*	-0.0110*	0.0900*		
0.800	-0.0162*	0.0002*	-0.0149*	0.1237**		
0.900	-0.1164*	0.0021*	-0.0004*	-0.3630***		

***, **, and * denote 10, 5, and 1 statistical significance levels

Panel quantile regression

Panel quantile process estimates

Figure 1 shows panel quantile regression from economic growth, square GDP, renewable energy consumption, and the disruption of the supply chain on the CO2 emissions across ten quantiles. The red area represents 95% confidence bonds, while the blue indicates the impact estimates. The impact of economic growth shows a positive effect and progressively increases for high quantiles. The impact of GDP² on CO2 emissions is negative, confirming the EKC existence of panel quantile ARDL results. The effect of renewable energy consumption is negative from 0.1th to 0.7 th and then decreases slightly. We also observe that the impact of supply chain disruption is stable at all quantile and less critical compared to economic growth and renewable energy consumption.

Slope and symmetry-asymmetry tests

First, we test that the slopes do not change differently across the panel. Table 5 presents the chi-square of the slope equality test. This value is 36.86, which is statically significant and indicates that the slope is different across panel quantile levels.

Next, we analyze whether the effects have the same character at high quantiles (0.75) and low quantiles (0.25). According to the Wald test and the chi-square value represented in Table 5, we find evidence of an asymmetric effect at the sum panel quantile of explanatory variables on CO₂ emissions for advanced economies and emerging markets.

Table 6 reports the slope and symmetry-asymmetry check. The positive sign and asymmetric value of the economic growth on clean energy at (0.25–0.75) quantiles imply that the response is stronger when economic growth increases than the dependence during the decrease period. This finding reveals the role of economic growth in catalyst environmental

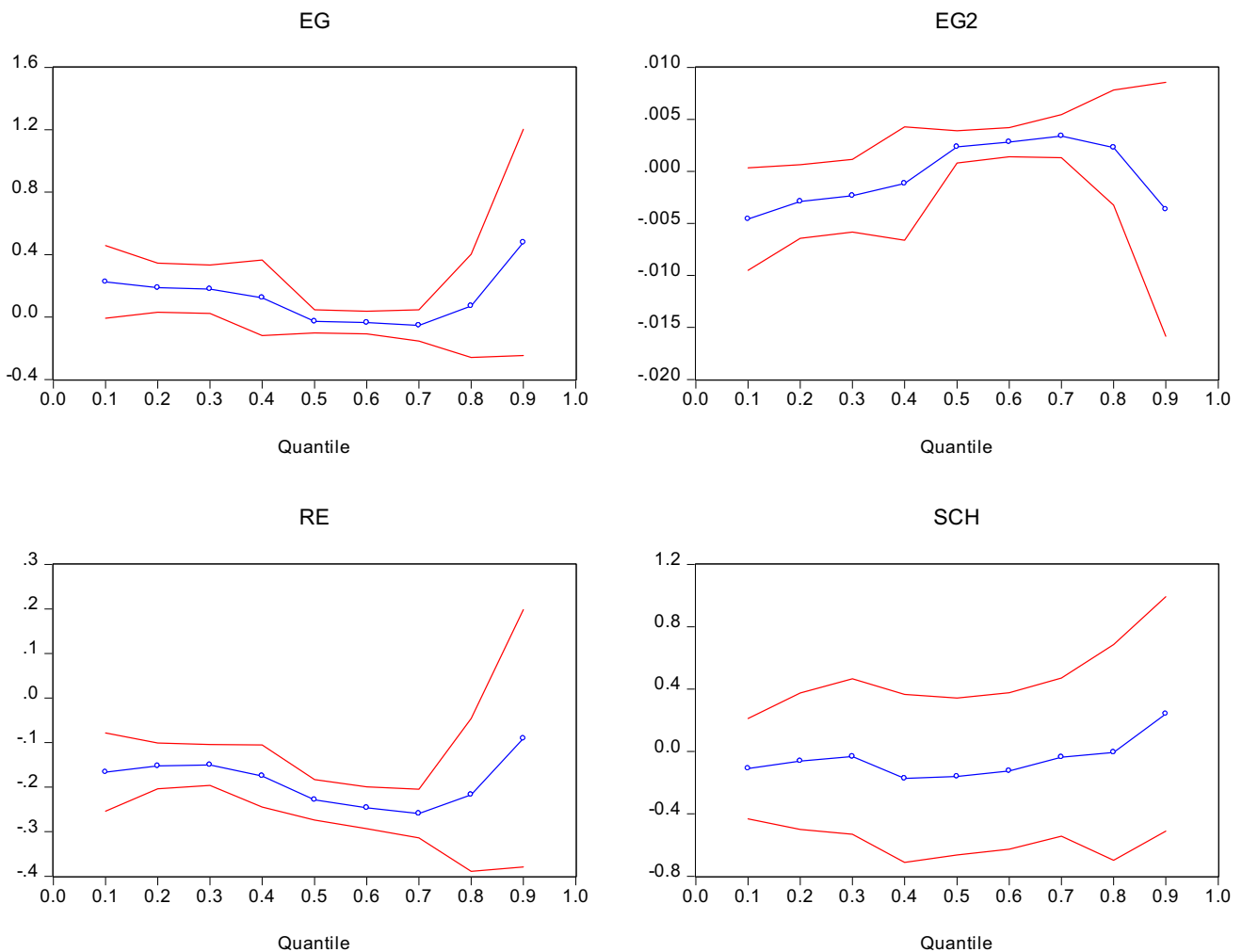


Fig. 1 Quantile progression Graph

Table 5 Quantile slope equality test

Test summary	Chi-Sq. statistic	Chi-Sq. d.f	Prob
Wald test	36.86	08	0.0000

Table 6 Slope and symmetry-asymmetry check

Test summary	Chi-square stat	Chi-sq. d.f	Prob	
Wald test	17.49	05	0.06	
Restriction detail: $b(\tau) + b(1-\tau) - 2*b(.5) = 0$				
Quantiles	Variable	Restricted value	Std. error	Prob
0.25, 0.75	EG	0.3	0.140	0.03
	EG ²	-0.005	0.002	0.04
	RE	0.04	0.030	0.09
	SCH	0.25	0.432	0.54
	C	-3.15	1.794	0.0789

degradation in the bullish and moderate market conditions. Similar results of the asymmetric test have existed for EG². In other words, the effect of economic growth on CO₂ emissions under the EKC hypothesis differs according to low and high quantiles. However, this is the same case in renewable energy and shows the asymmetrical effect. The supply chain disruption is not asymmetrical. It offers a relationship worth the emissions with the same slope on a quantile basis.

Conclusion

This study analyzes the effect of the supply chain disruption and renewable energy on CO₂ emissions in advanced and developing economies between 1997 and 2021 through the panel quantile ARDL model and panel quantile regression. Firstly, it indicates the positive impact of economic growth on carbon dioxide emissions. Secondly, we provide the environmental Kuznets curve (EKC) hypothesis. Third, renewable energy consumption is a negative effect, indicating that renewable energy reduces the CO₂ emissions.

It is noted that the supply chain disruption for the long run is positive at all quantiles indicating stronger evidence of association at the extreme low and high quantiles than at the intermediate quantile. Furthermore, the adjustment coefficient (ECM) speed seems negative and significant, indicating that the model corrects itself to equilibrium very slowly at the mean by 0.8%. Likewise, low and high quantiles at the extremes, showing the converge towered slowly in the bullish and moderate than bearish market conditions. GDP growth is not the only reason beyond environmental degradation in our cases. Renewable energy consumption and supply chain disruption are also the primary reasons for the CO₂ emissions.

Moving on to the effect, in the long run, we also observe that the impact of economic growth on the carbon emissions, in the long run, is positive at low and the intermediate quantiles while turning to be negative at high quantiles. Economic growth in the short run seems to be more critical than in the long run. The square of the GDP is negative from quantiles (40th–90th), which accepted the EKC hypothesis in the long run. Above said results support the findings in view of impact of renewable energy consumption on the is negative for most of the combination of couple prices quantiles reported in the literature. Economic growth's impact on the short-run carbon emissions shows a positive effect at all quantiles except at the upper quantile (0.9th). In addition, at low quantiles, the impact of 1% of economic growth leads to an increase in the emission of carbon by 0.22% and 0.14% from low quantiles (10th and 20th). At the mean and high quantiles, the results indicate a weak influence, whereas at upper 90th quantile, the effect turns negative.

The impact of renewable energy consumption decreases from 0.18 at lower quantile to 0.11 at high quantile, illustrating renewable energy consumption's role in mitigating environmental degradation in advanced economies and emerging markets. Therefore, it is essential to use renewable energy sources especially clean renewable energy such as solar or wind by the advanced economies and emerging markets in view of minimizing pollution and CO₂ emissions (Godil et al. 2021). Moreover, it would also help in combating global warming and climate change. Furthermore, sustainable development goals especially goal no. 6 (clean water and sanitation), goal no. 7 (affordable and clean energy), goal no. 12 (responsible consumption and production), and goal no. 13 (climate action) must be the part of planning and policy implications related to CO₂ emission, environmental degradation, global warming, climate change, etc. as these goals are particularly designed to focus on these issues. The effect of the supply chain decreases from 0.18 at the lower quantile, then converges to zero after the increase, and turns negative later at the extreme 90th quantile. In contrast, the positive effect in the short and long run of the supply chain is significant for most quantiles. It is somewhat converging relatively for advanced economies and emerging markets. The impact of renewable energy consumption seems more critical than economic growth and supply chain disruption during the short- and long-run periods. In this context, it would engage in the manufacturing more depending on renewable energy and intensifying competitive pricing under supply chain disruption. Additionally, it is essential to imply that the global supply chain will keep being under authorities' attention in the present and future to interact with economic growth as a catalytic effect on the carbon emissions. Furthermore, supply chain managers can consider the permanent inflation and price escalations, especially during the Russia-Ukraine war and further COVID-19 worldwide that

can be lagging the economy directly and the environmental degradation indirectly. The supply chain disruption reduces the environmental degradation under the bearish market conditions. For perspective research, we will be trying to quantify the impact using extensive data, which is helpful from the high-frequency information. Moreover, it would evaluate the effect during the Russia-Ukraine conflict. Present research work is limited to investigation of the effects of supply chain disruption, greener energy consumption, and economic growth on carbon emissions in advanced economies and emerging markets, which gives direction to future research to conduct similar studies in poor economies and upcoming markets. Furthermore, this study is carried out with reference to COVID-19 pandemic and Russia-Ukraine war; therefore, upcoming research would also be conducted in pre and post of above said situations.

Acknowledgements The authors have no sources of war of interest.

Author contribution Kamel Si Mohammed: writing, data collection, and review.

Sunil Tiwari: writing draft, conclusion, revision, English corrections, and discussion.

Diogo Ferraz: data, analysis, review, improve, and concept.

Irum Shahzadi: introduction, methods, and data analysis.

Data availability The datasets used during the current study are available from the corresponding or first author on reasonable request.

Declarations

Ethical approval Ethical approval is not applicable as the data is obtained from different databases, and no questionnaires for animals or humans are used.

Consent to publish Not applicable.

Consent to participate Not applicable.

Competing interests The authors declare no competing interests.

References

- Adebayo TS, Rjoub H, Akinsola GD, Oladipupo SD (2022) The asymmetric effects of renewable energy consumption and trade openness on carbon emissions in Sweden: new evidence from quantile-on-quantile regression approach. *Environ Sci Pollut Res* 29:1875–1886. <https://doi.org/10.1007/s11356-021-15706-4>
- Aktar MA, Alam MM, Al-Amin AQ (2020) Global economic crisis, energy use, CO2 emissions, and policy roadmap amid COVID19. *Sustain Prod Consum* 26:770–778
- Antonakakis N, Chatziantoniou I, Filis G (2017) Energy consumption, CO2 emissions, and economic growth: an ethical dilemma. *Renew Sustain Energy Rev* 68:808–824. <https://doi.org/10.1016/j.rser.2016.09.105>
- Annual Energy Outlook 2022 (2021) <https://www.eia.gov/outlooks/aeo/>
- Apergis N, Payne JE, Menyah K, Wolde-Rufael Y (2010) On the causal dynamics between emissions, nuclear energy, renewable energy, and economic growth. *Ecol Econ* 69:2255–2260. <https://doi.org/10.1016/j.ecolecon.2010.06.014>
- Arshed N, Nasir S, Saeed MI (2022) Impact of the external debt on standard of living: a case of Asian countries. *Soc Indic Res*. <https://doi.org/10.1007/s11205-022-02906-9>
- Baloch MA, Khan SUD, Ulucak ZŞ, Ahmad A (2020) Analyzing the relationship between poverty, income inequality, and CO2 emission in Sub-Saharan African countries. *Sci Total Environ* 740:139867
- Balsalobre-Lorente D, Ibáñez-Luzón L, Usman M, Shahbaz M (2022) The environmental Kuznets curve, based on the economic complexity, and the pollution haven hypothesis in PIIGS countries. *Renew Energy* 185:1441–1455. <https://doi.org/10.1016/j.renene.2021.10.059>
- Banday UJ, Aneja R (2020) Renewable and non-renewable energy consumption, economic growth and carbon emission in BRICS: evidence from bootstrap panel causality. *Int J Energy Sect Manag* 14:248–260. <https://doi.org/10.1108/IJESM-02-2019-0007>
- Bannister-Tyrrrell M, Meyer A, Faverjon C, Cameron A (2020) Preliminary evidence that higher temperatures are associated with lower incidence of COVID-19, for cases re-reported globally up to 29th February 2020. <https://doi.org/10.1101/2020.03.18.2003673120.2003.2018.20036731>
- Bella G (2018) Estimating the tourism induced environmental Kuznets curve in France. *J Sustain Tour* 26(12):2043–2052. <https://doi.org/10.1080/09669582.2018.1529768>
- Ben Jebli M, Ben Youssef S, Ozturk I (2015) The role of renewable energy consumption and trade: environmental Kuznets curve analysis for Sub-Saharan Africa countries. *African Dev Rev* 27:288–300. <https://doi.org/10.1111/1467-8268.12147>
- Benigno G, Giovanni JD, Groen J, Noble A (2022) Global supply chain pressure index: March 2022 Update. Liberty Street Economic, Federal Reserve Bank of New York
- Bilal A, Ehsan S, Tahir MM, Ahmad Z (2021) Online teaching during covid-19 pandemic challenges and the solutions. *Annals of Punjab Medical College (APMC)* 15(4):245–249
- Bölük G, Mert M (2014) Fossil & renewable energy consumption, GHGs (greenhouse gases) and economic growth: evidence from a panel of EU (European Union) countries. *Energy* 74:439–446. <https://doi.org/10.1016/j.energy.2014.07.008>
- Breitung J (2001) Rank tests for nonlinear cointegration. *J Bus Econ Stat* 19(3):331–340
- Çakmak EE, Acar S (2022) The nexus between economic growth, renewable energy and ecological footprint: an empirical evidence from most oil-producing countries. *J Clean Prod* 352:131548. <https://doi.org/10.1016/j.jclepro.2022.131548>
- Chen C, Liu Y, Greig JA, Shen Z, Shi Y (2022) The impacts of COVID-19 on clean energy labor markets: evidence from multifaceted analysis of public health interventions and COVID-health factors. *Energy Policy* 112880. <https://doi.org/10.1016/j.enpol.2022.112880>
- Cho JS, Kim TH, Shin Y (2015) Quantile cointegration in the autoregressive distributed-lag modeling framework. *J Econom* 188(1):281–300
- Choi TM (2020) Innovative “Bring-Service-Near-Your-Home” operations under Corona-Virus (COVID-19/SARS-CoV-2) outbreak: can logistics become the Messiah? *Transp. Res Part E Logist Transp Rev* 140:101961. <https://doi.org/10.1016/j.tre.2020.101961>
- Chopra R, Magazzino C, Shah MI, Sharma GD, Rao A, Shahzad U (2022) The role of renewable energy and natural resources for sustainable agriculture in ASEAN countries: do carbon emissions and deforestation affect agriculture productivity? *Resour Policy* 76:102578
- Chowdhury P, Paul SK, Kaiser S, Moktadir MA (2021) COVID-19 pandemic related supply chain studies: a systematic review.

- Transp Res Part E Logist Transp Rev 148:102271. <https://doi.org/10.1016/j.tre.2021.102271>
- Dawar I, Dutta A, Bouri E, Saeed T (2021) Crude oil prices and clean energy stock indices: lagged and asymmetric effects with quantile regression. *Renew Energy* 163:288–299. <https://doi.org/10.1016/j.renene.2020.08.162>
- Dogan E, Ozturk I (2017) The influence of renewable and non-renewable energy consumption and real income on CO2 emissions in the USA: evidence from structural break tests. *Environ Sci Pollut Res* 24:10846–10854. <https://doi.org/10.1007/s11356-017-8786-y>
- Dogan E, Seker F (2016) The influence of real output, renewable and non-renewable energy, trade and financial development on carbon emissions in the top renewable energy countries. *Renew Sustain Energy Rev* 60:1074–1085. <https://doi.org/10.1016/j.rser.2016.02.006>
- Ehigiamusoe KU, Dogan E (2022) The role of interaction effect between renewable energy consumption and real income in carbon emissions: evidence from low-income countries. *Renew Sustain Energy Rev* 154:111883. <https://doi.org/10.1016/j.rser.2021.111883>
- Farhan Bashir M, Sadiq M, Talbi B, Shahzad L, Adnan Bashir M (2022) An outlook on the development of renewable energy, policy measures to reshape the current energy mix, and how to achieve sustainable economic growth in the post COVID-19 era. *Environ Sci Pollut Res* 1–12
- Frodyma K, Papież M, Śmiech S (2022) Revisiting the environmental Kuznets curve in the European Union countries. *Energy* 241. <https://doi.org/10.1016/j.energy.2021.122899>
- Godil DI, Yu Z, Sharif A, Usman R, Khan SAR (2021) Investigate the role of technology innovation and renewable energy in reducing transport sector CO2 emission in China: a path toward sustainable development. *Sustain Dev* 29(4):694–707
- He L, Zhang X, Yan Y (2021) Heterogeneity of the environmental Kuznets curve across Chinese cities: how to dance with ‘shackles’?. *Ecol Indic* 130. <https://doi.org/10.1016/j.ecolind.2021.108128>
- Hoang AT, Foley AM, Nižetić S, Huang Z, Ong HC, Ölçer AI, Pham VV, Nguyen XP (2022) Energy-related approach for reduction of CO2 emissions: a strategic review on the port-to-ship pathway. *J Clean Prod* 355:131772. <https://doi.org/10.1016/j.jclepro.2022.131772>
- Im KS, Pesaran MH, Shin Y (2003) Testing for unit roots in heterogeneous panels. *J Econ* 115(1):53–74
- Ivanov D (2020) Predicting the impacts of epidemic outbreaks on global supply chains: a simulation-based analysis on the coronavirus outbreak (COVID-19/SARS-CoV-2) case. *Transp Res Part E Logist Transp Rev* 136:101922. <https://doi.org/10.1016/j.tre.2020.101922>
- Kao C (1999) Spurious regression and residual-based tests for cointegration in panel data. *J Econom* 90:1–44. [https://doi.org/10.1016/S0304-4076\(98\)00023-2](https://doi.org/10.1016/S0304-4076(98)00023-2)
- Karaduman HA, Karaman-Akgül A, Çağlar M, Akbaş HE (2020) The relationship between logistics performance and carbon emissions: an empirical investigation on Balkan countries. *Int J Clim Chang Strateg Manag* 12:449–461. <https://doi.org/10.1108/IJCCSM-05-2020-0041>
- Katircioglu ST (2014) Testing the tourism-induced EKC hypothesis: the case of Singapore. *Econ Model* 41:383–391. <https://doi.org/10.1016/j.econmod.2014.05.028>
- Khan SAR, Sharif A, Golpîra H, Kumar A (2019) A green ideology in Asian emerging economies: from environmental policy and sustainable development. *Sustain Dev* 27(6):1063–1075
- Kuznets S (1955) Growth, economic inequality, income. *Am Econ Rev* 45:1–28
- Levin A, Lin CF, Chu CSJ (2002) Unit root tests in panel data: asymptotic and finite-sample properties. *J Econ* 108(1):1–24
- Liu J, Feng Y, Zhu Q, Sarkis J (2018) Green supply chain management and the circular economy: reviewing theory for advancement of both fields. *Int J Phys Distrib Logist Manag* 48:794–817. <https://doi.org/10.1108/IJPDLM-01-2017-0049>
- Lu C, Venevsky S, Shi X, Wang L, Wright JS, Wu C (2021) Econometrics of the environmental Kuznets curve: testing advancement to carbon intensity-oriented sustainability for eight economic zones in China. *J Clean Prod* 283:124561. <https://doi.org/10.1016/j.jclepro.2020.124561>
- Ma X, Ahmad N, Oei PY (2021) Environmental Kuznets curve in France and Germany: role of renewable and nonrenewable energy. *Renew Energy* 172:88–99. <https://doi.org/10.1016/j.renene.2021.03.014>
- Maddala GS, Wu S (1999) A comparative study of unit root tests with panel data and a new simple test. *Oxf Bull Econ Stat* 61(S1):631–652
- Magazzino C, Alola AA, Schneider N (2021) The trilemma of innovation, logistics performance, and environmental quality in 25 top-most logistics countries: a quantile regression evidence. *J Clean Prod* 322:129050. <https://doi.org/10.1016/j.jclepro.2021.129050>
- Mariano EB, Gobbo JA, de Camioto FC, do Rebelatto DAN (2017) CO2 emissions and logistics performance: a composite index proposal. *J Clean Prod* 163:166–178. <https://doi.org/10.1016/j.jclepro.2016.05.084>
- Mo B, Li Z, Meng J (2022) The dynamics of carbon on green energy equity investment: quantile-on-quantile and quantile coherency approaches. *Environ Sci Pollut Res* 29:5912–5922. <https://doi.org/10.1007/s11356-021-15647-y>
- Muhammad S, Long X, Salman M (2020) COVID-19 pandemic and environmental pollution: a blessing in disguise? *Sci Total Environ* 728:138820
- Mujtaba A, Jena PK, Bekun FV, Sahu PK (2022) Symmetric and asymmetric impact of economic growth, capital formation, renewable and non-renewable energy consumption on environment in OECD countries. *Renew Sustain Energy Rev* 160:112300. <https://doi.org/10.1016/j.rser.2022.112300>
- Namahoro JP, Wu Q, Zhou N, Xue S (2021) Impact of energy intensity, renewable energy, and economic growth on CO2 emissions: evidence from Africa across regions and income levels. *Renew Sust Energy Rev* 147:111–233
- Nundy S, Ghosh A, Mesloub A, Albaqawy GA, Alnaim MM (2021) Impact of COVID-19 pandemic on socio-economic, energy-environment and transport sector globally and sustainable development goal (SDG). *J Clean Prod* 312:127705. <https://doi.org/10.1016/j.jclepro.2021.127705>
- Pesaran MH, Shin Y (1998) An autoregressive distributed lag modelling approach to cointegration analysis. In: Strøm S (ed) *Econometrics and Economic Theory in The Twentieth Century: The Ragnar Frisch Centennial Symposium*. Cambridge University Press, Cambridge, UK, pp 371–413
- Pham NTA, Sim N (2020) Shipping cost and development of the landlocked developing countries: panel evidence from the common correlated effects approach. *World Econ* 43:892–920. <https://doi.org/10.1111/twec.12871>
- Rehman Khan SA, Zhang Y, Anees M, Golpîra H, Lahmar A, Qianli D (2018) Green supply chain management, economic growth and environment: a GMM based evidence. *J Clean Prod*. <https://doi.org/10.1016/j.jclepro.2018.02.226>
- Robalino-López A, Mena-Nieto Á, García-Ramos JE, Golpe AA (2015) Studying the relationship between economic growth, CO2 emissions, and the environmental Kuznets curve in Venezuela (1980–2025). *Renew Sustain Energy Rev* 41:602–614. <https://doi.org/10.1016/j.rser.2014.08.081>
- Santosa W, Nilawati Y, Kusuma R (2022) Analysis of the relationship between logistics performance and carbon emissions in ASEAN. <https://doi.org/10.4108/eai.3-8-2021.2315164>

- Selmi R, Mensi W, Hammoudeh S, Bouoiyour J (2018) Is Bitcoin a hedge, a safe haven or a diversifier for oil price movements? A Comparison with gold. *Energy Econ* 74:787–801. <https://doi.org/10.1016/j.eneco.2018.07.007>
- Shafique M, Azam A, Rafiq M, Luo X (2021) Investigating the nexus among transport, economic growth and environmental degradation: evidence from panel ARDL approach. *Transp Policy* 109:61–71. <https://doi.org/10.1016/j.tranpol.2021.04.014>
- Shahbaz M, Hye QMA, Tiwari AK, Leitão NC (2013) Economic growth, energy consumption, financial development, international trade and CO2 emissions in Indonesia. *Renew Sustain Energy Rev* 25:109–121. <https://doi.org/10.1016/j.rser.2013.04.009>
- Shahzad U, Gupta M, Sharma GD, Rao A, Chopra R (2022) Resolving energy poverty for social change: research directions and agenda. *Technol Forecast Soc Chang* 181:121777
- Sharif A, Saha S, Loganathan N (2017a) Does tourism sustain economic growth? Wavelet-based evidence from the United States. *Tour Anal* 22(4):467–482
- Sharif A, Jammazi R, Raza SA, Shahzad SJH (2017b) Electricity and growth nexus dynamics in Singapore: fresh insights based on wavelet approach. *Energy Policy* 110:686–692
- Sharif A, Raza SA, Ozturk I, Afshan S (2019) The dynamic relationship of renewable and nonrenewable energy consumption with carbon emission: a global study with the application of heterogeneous panel estimations. *Renew Energy* 133:685–691
- Sharif A, Baris-Tuzemen O, Uzuner G, Ozturk I, Sinha A (2020a) Revisiting the role of renewable and non-renewable energy consumption on Turkey's ecological footprint: Evidence from Quantile ARDL approach. *Sustain Cities Soc* 57:102138
- Sharif A, Afshan S, Chrea S, Amel A, Khan SAR (2020b) The role of tourism, transportation and globalization in testing environmental Kuznets curve in Malaysia: new insights from quantile ARDL approach. *Environ Sci Pollut Res* 27(20):25494–25509
- Sharma GD, Shah MI, Shahzad U, Jain M, Chopra R (2021a) Exploring the nexus between agriculture and greenhouse gas emissions in BIMSTEC region: the role of renewable energy and human capital as moderators. *J Environ Manage* 297:113316
- Sharma GD, Tiwari AK, Erkut B, Mundi HS (2021b) Exploring the nexus between non-renewable and renewable energy consumptions and economic development: Evidence from panel estimations. *Renew Sustain Energy Rev* 146:111152
- Sim N, Zhou H (2015) Oil prices, US stock return, and the dependence between their quantiles. *J Bank Financ* 55:1–8. <https://doi.org/10.1016/j.jbankfin.2015.01.013>
- Sohaïl MT, Ullah S, Majeed MT, Usman A (2021) Pakistan management of green transportation and environmental pollution: a non-linear ARDL analysis. *Environ Sci Pollut Res* 28:29046–29055. <https://doi.org/10.1007/s11356-021-12654-x>
- Song Z (2021) Economic growth and carbon emissions: estimation of a panel threshold model for the transition process in China. *J Clean Prod* 278:123773. <https://doi.org/10.1016/j.jclepro.2020.123773>
- Soytas U, Sari R, Ewing BT (2007) Energy consumption, income, and carbon emissions in the United States. *Ecol Econ* 62:482–489. <https://doi.org/10.1016/j.ecolecon.2006.07.009>
- Stern DI, Common MS, Barbier EB (1996) Economic growth and environmental degradation: the environmental Kuznets curve and sustainable development. *World Dev* 24(7):1151–1160
- Su X, Li Y, Fang K, Long Y (2022) Does China's direct investment in "Belt and Road Initiative" countries decrease their carbon dioxide emissions? *J Clean Prod* 339:130543. <https://doi.org/10.1016/j.jclepro.2022.130543>
- Suki NM, Sharif A, Afshan S, Suki NM (2020) Revisiting the environmental Kuznets curve in Malaysia: the role of globalization in sustainable environment. *J Clean Prod* 264:121669
- Suki NM, Suki NM, Sharif A, Afshan S (2021) The role of logistics performance for sustainable development in top Asian countries: evidence from advance panel estimations. *Sustain Dev* 29:595–606. <https://doi.org/10.1002/sd.2160>
- Tiwari S, Rosak-Szyrocka J, Żywiótek J (2022) Internet of things as a sustainable energy management solution at tourism destinations in India. *Energies* 15(7):2433
- Tosepu R, Gunawan J, Efendy DS, Lestari H, Bahar H, Asfan P (2020) Correlation between weather and Covid-19 pandemic in Jakarta, Indonesia. *Sci Total Environ* 725:138436
- Vural G (2020) How do output, trade, renewable energy and non-renewable energy impact carbon emissions in selected Sub-Saharan African countries? *Resour Policy* 69. <https://doi.org/10.1016/j.resourpol.2020.101840>
- Wang Q, Zhang F, Li R, Li L (2022) The impact of renewable energy on decoupling economic growth from ecological footprint – an empirical analysis of 166 countries. *J Clean Prod* 354:131706. <https://doi.org/10.1016/j.jclepro.2022.131706>
- Wang Q, Su M (2020) A preliminary assessment of the impact of COVID-19 on environment—A case study of China. *Sci Total Environ* 728:138915
- Wu Y, Jing W, Liu J, Ma Q, Yuan J, Wang Y et al (2020) Effects of temperature and humidity on the daily new cases and new deaths of COVID-19 in 166 countries. *Sci Total Environ* 729:139051
- Xiao J, Hu C, Ouyang G, Wen F (2019) Impacts of oil implied volatility shocks on stock implied volatility in China: empirical evidence from a quantile regression approach. *Energy Econ* 80:297–309. <https://doi.org/10.1016/j.eneco.2019.01.016>
- York R, McGee JA (2017) Does renewable energy development decouple economic growth from CO2 emissions? *Socius Sociol Res a Dyn World* 3:237802311668909. <https://doi.org/10.1177/2378023116689098>
- Zafar MW, Saleem MM, Destek MA, Caglar AE (2022) The dynamic linkage between remittances, export diversification, education, renewable energy consumption, economic growth, and CO2 emissions in top remittance-receiving countries. *Sustain Dev* 30:165–175. <https://doi.org/10.1002/sd.2236>
- Zafeiriou E, Sariannidis N, Kalogeridis N, Drimbetas E (2016) Carbon emissions and baltic dry index: a different approach for environmental Kuznets curve. *Int J Ecol Econ Stat* 37:11–23
- Zhao X, Ramzan M, Sengupta T, Sharma GD, Shahzad U, Cui L (2022) Impacts of bilateral trade on energy affordability and accessibility across Europe: does economic globalization reduce energy poverty? *Energy Build* 262:112023
- Zhu K, Guo X, Zhang Z (2022) Reevaluation of the carbon emissions embodied in global value chains based on an inter-country input-output model with multinational enterprises. *Appl Energy* 307:118220
- Zoundi Z (2017) CO2 emissions, renewable energy and the environmental Kuznets curve, a panel cointegration approach. *Renew Sustain Energy Rev* 72:1067–1075. <https://doi.org/10.1016/j.rser.2016.10.018>

Publisher's note Springer Nature remains neutral with regard to jurisdictional claims in published maps and institutional affiliations.

Springer Nature or its licensor holds exclusive rights to this article under a publishing agreement with the author(s) or other rightsholder(s); author self-archiving of the accepted manuscript version of this article is solely governed by the terms of such publishing agreement and applicable law.

Authors and Affiliations

Kamel Si Mohammed¹  · Sunil Tiwari²  · Diogo Ferraz^{3,4,5}  · Irum Shahzadi⁶ 

Kamel Si Mohammed
kamel.simohammed@univ-temouchent.edu.dz

Sunil Tiwari
tiwari.sunil10@outlook.com

Diogo Ferraz
diogoferraz@alumni.usp.br

¹ Faculty of Economics and Management, Department of Economics, University of Ain Temouchent, Ain Temouchent, Algeria

² Department of Tourism Studies, School of Business Studies, Central University of Kerala, Kasaragod, India

³ Department of Economics, Federal University of Ouro Preto (DEECO-UFOP), Rua do Catete 166 – Centro, Mariana 35420000, Brazil

⁴ Innovation Economics, Institute of Economics, University of Hohenheim, 70599 Stuttgart, Germany

⁵ Department of Production Engineering, School of Engineering of Bauru, São Paulo State University (UNESP), Campus Bauru, Bauru 17033-360, Brazil

⁶ Department of Production Engineering, São Paulo State University (UNESP), Bauru, Brazil